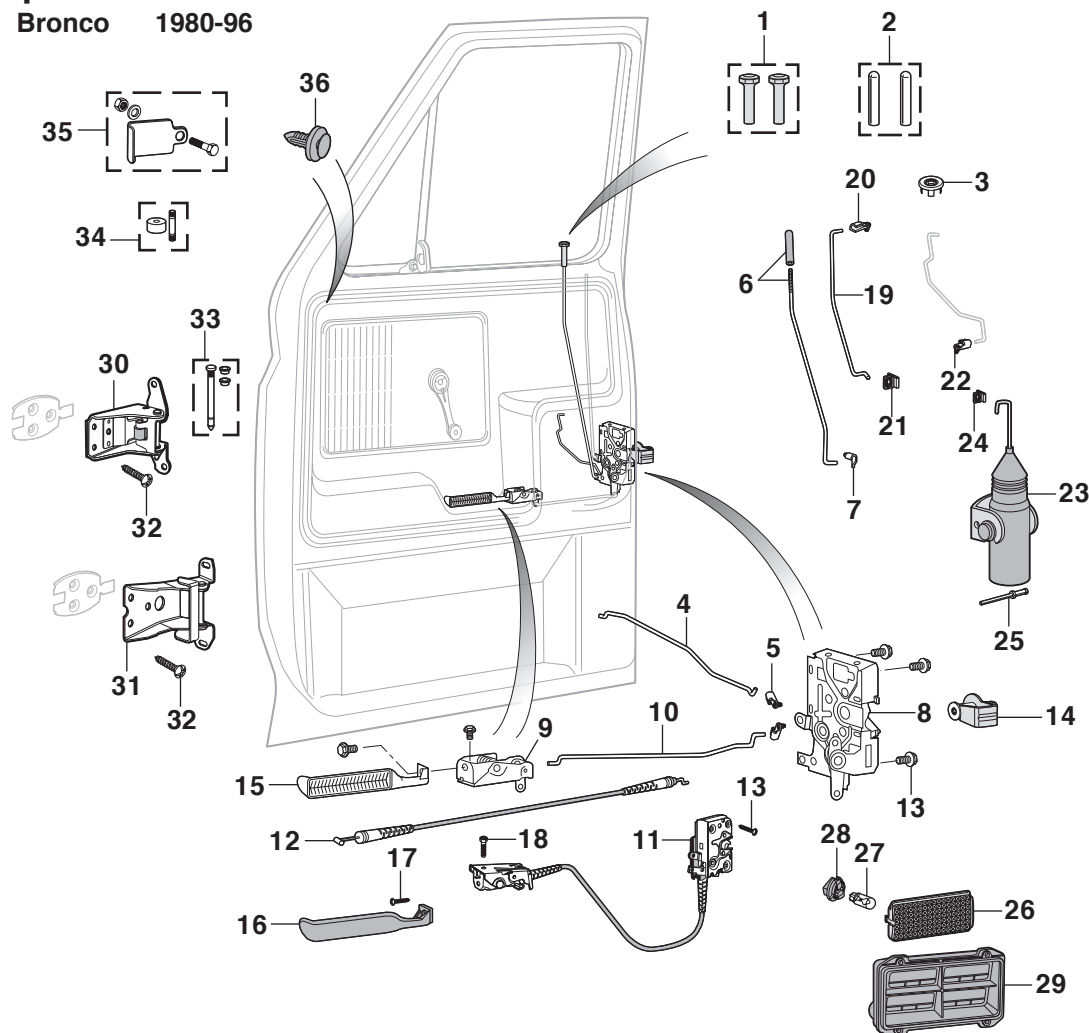


Door Components

F150 F250 Bronco 1980-96



PART	ILL#	DESCRIPTION AND APPLICATION	REQD	LIST	SELL
40-2680	(1)	DOOR LOCK KNOB SET BLACK	80-81 (1)	6.19	4.95
40-2681	(2)	DOOR LOCK KNOB SET CHROME	81-86 (1)	6.19	4.95
40-2682		DOOR LOCK KNOB SET BLACK	87-96 (1)	9.94	7.95
40-2684	(3)	DOOR LOCK GROMMET-STAINLESS	87-96 (2)	2.44	1.95
40-2685		DOOR LOCK GROMMET-BLACK	87-96 (2)	7.44	5.95
40-2746	(4)	LATCH ROD LOCK-LH	80-81 (1)	18.69	14.95
40-1609	(5)	RETAINER-ROD	80-91 (2)	2.44	1.95
40-2748	(6)	LATCH ROD LOCK-LH W/KNOB	81-86 (1)	21.19	16.95
40-2752		LATCH ROD LOCK-LH W/KNOB	87-96 (1)	22.44	17.95
40-2753		LATCH ROD LOCK-RH W/KNOB	87-96 (1)	22.44	17.95
40-1362	(7)	RETAINER-ROD	80-96 (2)	1.56	1.25
49-7242	(8)	DOOR LATCH-LH	80-81 (1)	149.94	119.95
49-7240		DOOR LATCH-LH	82-91 (1)	99.94	79.95
49-7241		DOOR LATCH-RH	82-91 (1)	99.94	79.95
49-7232	(9)	DOOR HANDLE CONTROL ASSY-LH	80-91 (1)	49.94	39.95
49-7233		DOOR HANDLE CONTROL ASSY-RH	80-91 (1)	49.94	39.95
40-2754	(10)	LATCH ROD-INSIDE HANDLE-LH	80-91 (1)	28.69	22.95
40-1609	(5)	RETAINER-ROD	80-91 (1)	2.44	1.95
49-7238	(11)	DOOR LATCH-LH W/CONTROL	92-96 (1)	212.44	169.95
49-7239		DOOR LATCH-RH W/CONTROL	92-96 (1)	212.44	169.95
49-7251	(12)	LATCH CONTROL CABLE	92-96 (2)	12.44	9.95
40-0465	(13)	SCREW-DOOR LATCH	80-96 (6)	3.69	2.95
40-2772	(14)	DOOR LATCH STRIKER	80-96 (2)	16.19	12.95
49-7660	(15)	DOOR HANDLE-INR-LH CHROME "B"	80-86 (1)	24.94	19.95
49-7661		DOOR HANDLE-INR-RH CHROME "B"	80-86 (1)	24.94	19.95
49-7662	(16)	DOOR HANDLE-INR-LH BLACK "C"	87-96 (1)	12.44	9.95
49-7663		DOOR HANDLE-INR-RH BLACK "C"	87-96 (1)	12.44	9.95
40-0440	(17)	BOLT	80-96 (2)	4.94	3.95
40-0459	(18)	BOLT	80-96 (2)	1.19	.95
40-2756	(19)	LATCH ROD-OUTSIDE HANDLE-LH	80-96 (1)	62.44	49.95
40-1362	(20)	RETAINER-ROD-UPPER	80-96 (2)	1.56	1.25
40-1361	(21)	RETAINER-ROD-LOWER	80-96 (2)	4.94	3.95

Keyless Remote Kit
See Page 18

PART	ILL#	DESCRIPTION AND APPLICATION	REQD	LIST	SELL
40-1609	(22)	RETAINER-ROD	80-96 (2)	2.44	1.95
50-7793	(23)	DOOR LOCK ACTUATOR	9/88-91 (2)	74.94	59.95
47-0924		DOOR LOCK ACTUATOR	92-93 (2)	99.94	79.95
47-0925		DOOR LOCK ACTUATOR	94-96 (2)	74.94	59.95
40-1361	(24)	RETAINER-ACTUATOR ROD	80-89 (2)	4.94	3.95
40-1362		RETAINER-ACTUATOR ROD	90-96 (2)	1.56	1.25
40-2742	(25)	RIVET	81-96 (2)	.69	.55
47-4340	(26)	DOOR COURTESY LENS-LH	92-96 (1)	13.69	10.95
47-0234	(27)	BULB-CLEAR	92-96 (2)	1.19	.95
47-0190	(28)	SOCKET	92-96 (2)	2.44	1.95
49-7558	(29)	DOOR VENT VALVE	87-96 (2)	37.44	29.95
49-7270	(30)	DOOR HINGE-UPPER-LH	80-96 (1)	62.44	49.95
49-7271		DOOR HINGE-UPPER-RH	80-96 (1)	62.44	49.95
49-7272	(31)	DOOR HINGE-LOWER	80-96 (2)	49.94	39.95
40-0288	(32)	BOLT-DOOR HINGE	80-96(20)	1.19	.95
49-7404	(33)	DOOR HINGE PIN KIT	80-96 (4)	8.69	6.95
49-7405	(34)	DOOR HINGE ROLLER & PIN	85-96 (2)	7.44	5.95
49-7406	(35)	DOOR HINGE SPRING	80-96 (2)	6.19	4.95
40-0793	(36)	RETAINER-DOOR PANEL	80-96 A/R	1.19	.95

Note: "A" Includes screws for installation.

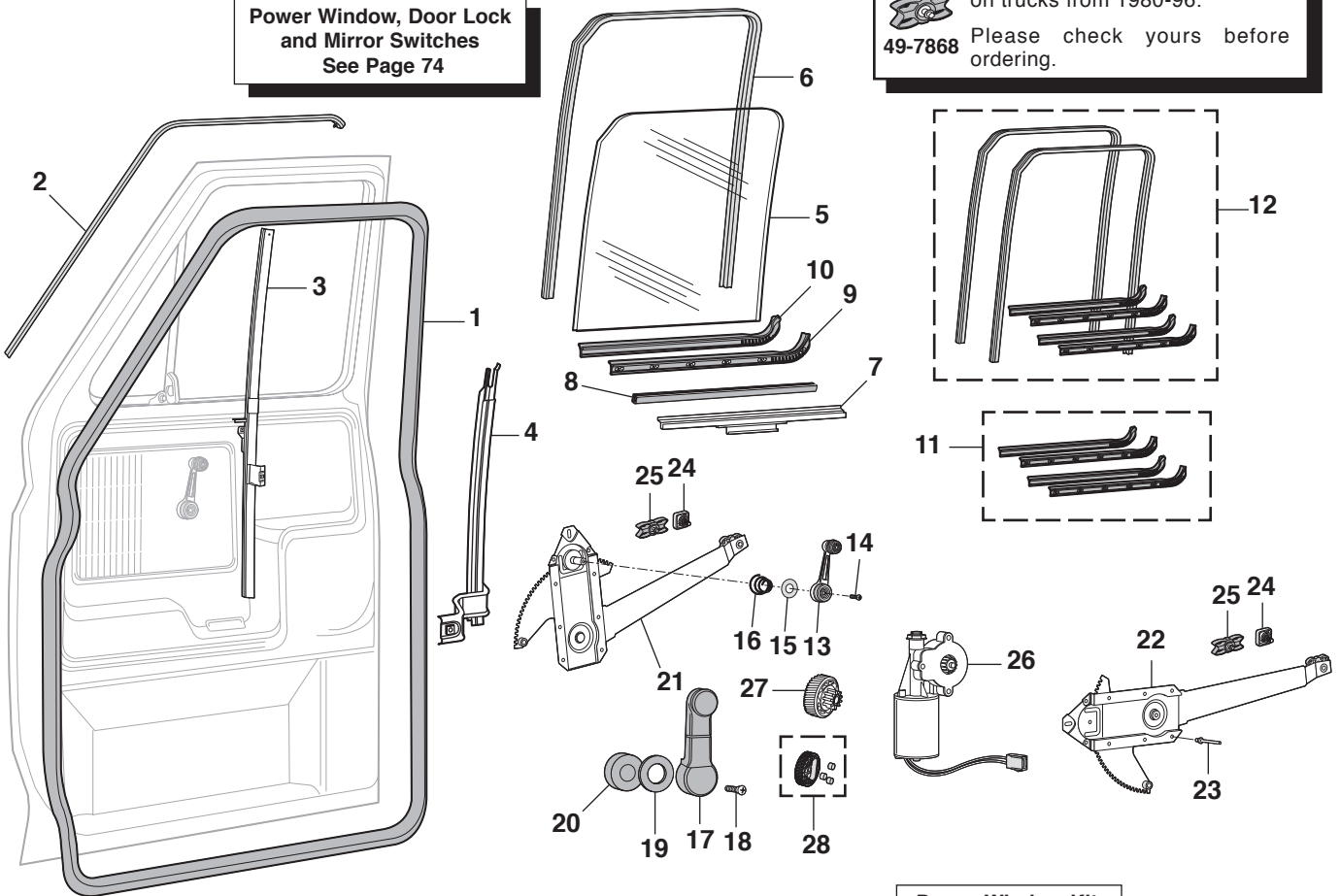
"B" Original style for 1980-86 models but can be used on 1987-96 models.

"C" Original style for 1987-96 models but can be used on 1980-86 models.

Door Glass and Components

F100 F150 F250 Bronco 1980-96

Power Window, Door Lock
and Mirror Switches
See Page 74



Window Regulator Rollers

49-7867 There were two types of Window Regulator Rollers used on trucks from 1980-96.



49-7868 Please check yours before ordering.

Power Window Kit See Page 18

PART	ILL#	DESCRIPTION AND APPLICATION	REQD	LIST	SELL
49-9339	(1)	WEATHERSTRIP-ON CAB	80-96 (2)	49.94	39.95
49-9346	(2)	WEATHERSTRIP-ON DOOR-LH	80-96 (1)	24.94	19.95
49-9347		WEATHERSTRIP-ON DOOR-RH	80-96 (1)	24.94	19.95
49-7396	(3)	DIVISION BAR-LH	80-86 (1)	87.44	69.95
49-7397		DIVISION BAR-RH	80-86 (1)	87.44	69.95
49-7390	(4)	GLASS CHANNEL-REAR-LH	80-96 (1)	87.44	69.95
49-7391		GLASS CHANNEL-REAR-RH	80-96 (1)	99.94	79.95
49-7354	(5)	DOOR GLASS-LH CLEAR	80-86 (1)	62.44	49.95
49-7355		DOOR GLASS-RH CLEAR	80-86 (1)	62.44	49.95
49-7356		DOOR GLASS-LH TINTED	80-86 (1)	62.44	49.95
49-7357		DOOR GLASS-RH TINTED	80-86 (1)	62.44	49.95
49-7358		DOOR GLASS-LH TINTED	87-96 (1)	49.94	39.95
49-7359		DOOR GLASS-RH TINTED	87-96 (1)	49.94	39.95
49-7194	(6)	DOOR GLASS RUN	80-96 (2)	24.94	19.95
49-7222	(7)	WINDOW LIFT CHANNEL	80-96 (2)	49.94	39.95
49-9300	(8)	CHANNEL RUBBER	80-96 (2)	16.19	12.95
49-7104	(9)	ANTI-RATTLE-INNER-LH	80-86 (1)	21.19	16.95
49-7105		ANTI-RATTLE-INNER-RH	80-86 (1)	21.19	16.95
49-7160		ANTI-RATTLE-INNER-LH	87-96 (1)	24.94	19.95
49-7161		ANTI-RATTLE-INNER-RH	87-96 (1)	24.94	19.95
49-7106	(10)	ANTI-RATTLE-OUTER-LH	80-86 (1)	24.94	19.95
49-7107		ANTI-RATTLE-OUTER-RH	80-86 (1)	24.94	19.95
49-7162		ANTI-RATTLE-OUTER-LH	87-96 (1)	24.94	19.95
49-7163		ANTI-RATTLE-OUTER-RH	87-96 (1)	24.94	19.95
49-7132	(11)	WINDOW ANTI-RATTLE KIT-4PC	80-86 (1)	62.44	49.95
49-7133		WINDOW ANTI-RATTLE KIT-4PC	87-96 (1)	74.94	59.95
49-7152	(12)	DOOR ANTI-RATTLE KIT-6PC	80-86 (1)	112.44	89.95
49-7153		DOOR ANTI-RATTLE KIT-6PC	87-96 (1)	124.94	99.95

PART	ILL#	DESCRIPTION AND APPLICATION	REQD	LIST	SELL
40-2622	(13)	WINDOW HANDLE W/CLEAR KNOB	80-86 (2)	8.69	6.95
40-0480	(14)	SCREW-HANDLE	80-86 (2)	.50	.40
40-2608	(15)	SPACER-HANDLE	80-86 (2)	2.44	1.95
40-3232	(16)	SPRING	80-86 (2)	2.44	1.95
40-2623	(17)	WINDOW HANDLE-BLACK	87-96 (2)	12.44	9.95
40-0480	(18)	SCREW-HANDLE	87-96 (2)	.50	.40
40-2611	(19)	SPACER-HANDLE	87-96 (2)	8.69	6.95
40-3235	(20)	SEAL-HANDLE	87-91 (2)	9.94	7.95
40-3236		SEAL-HANDLE	92-96 (2)	9.94	7.95
49-7926	(21)	WINDOW REGULATOR-LH MANUAL	80-91 (1)	62.44	49.95
49-7927		WINDOW REGULATOR-RH MANUAL	80-91 (1)	62.44	49.95
49-7932		WINDOW REGULATOR-LH MANUAL	92-96 (1)	62.44	49.95
49-7933		WINDOW REGULATOR-RH MANUAL	92-96 (1)	62.44	49.95
49-7928	(22)	WINDOW REGULATOR-LH POWER	81-96 (1)	62.44	49.95
49-7929		WINDOW REGULATOR-RH POWER	81-96 (1)	62.44	49.95
40-2740	(23)	RIVET-REGULATOR	80-96 (8)	.81	.65
49-7867	(24)	WINDOW REG ROLLER & NUT SQUARE	80-96 (2)	7.44	5.95
49-7868	(25)	REG ROLLER & RIVET RECTANGLE	80-96 (2)	4.94	3.95
47-1050	(26)	POWER WINDOW MOTOR-LH/RH	80-9/80 (2)	62.44	49.95
47-1050		POWER WINDOW MOTOR-LH	10/80-4/92(1)	62.44	49.95
47-1051		POWER WINDOW MOTOR-RH	10/80-4/92(1)	62.44	49.95
47-1052		POWER WINDOW MOTOR-LH	5/92-95 (1)	62.44	49.95
47-1053		POWER WINDOW MOTOR-RH	5/92-95 (1)	62.44	49.95
50-7711		POWER WINDOW MOTOR-LH	96 (1)	62.44	49.95
50-7710		POWER WINDOW MOTOR-RH	96 (1)	62.44	49.95
47-1048	(27)	WINDOW MOTOR GEAR KIT	80-4/92 (1)	31.19	24.95
47-1049	(28)	WINDOW MOTOR GEAR KIT	5/92-95 (1)	24.94	19.95

Keyless Remote Access Adds Safety and Convenience



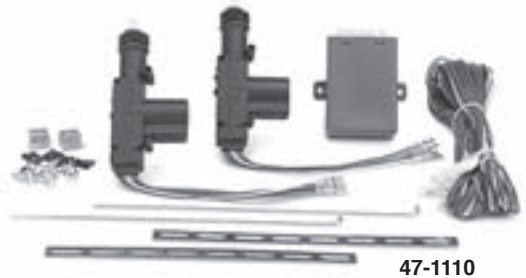
Remote Keyless Access

Unlock both doors with the touch of a button or the turn of your regular door key. It also works from the inside if locking or unlocking the driver's side door.

This is a great safety and convenience add-on for your vehicle. This kit is easy to install with no switches. Universal 2 door application ... call or go online and order today!

PART	DESCRIPTION AND APPLICATION	REQD	LIST	SELL
47-1100	KEYLESS REMOTE KIT-2 DOOR	80-96 (1)	87.44	69.95

Electric Door Locks ... Real Convenience



47-1110

Now you can unlock the passenger side door from the driver's side door just by the turn of your regular door key. Electric Door Locks also work from the inside if locking or unlocking the driver's side door. There are no messy switches to deal with. This kit is easy to install.

PART	DESCRIPTION AND APPLICATION	REQD	LIST	SELL
47-1110	ELECTRIC DOOR LOCK KIT-2 DOOR	80-96 (1)	62.44	49.95

Power Window Kit

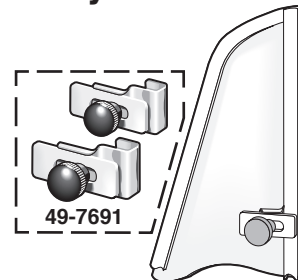


47-1105

Double switch construction allows the driver to operate both windows. The components are concealed inside the door to give you added security. Comes with easy-to-follow instructions, hardware and color coded wiring harness for error-free installation.

PART	DESCRIPTION AND APPLICATION	REQD	LIST	SELL
47-1105	POWER WINDOW KIT-2 DOOR	80-96 (1)	187.44	149.95

Vent Window Lock Prevents Costly Break-ins



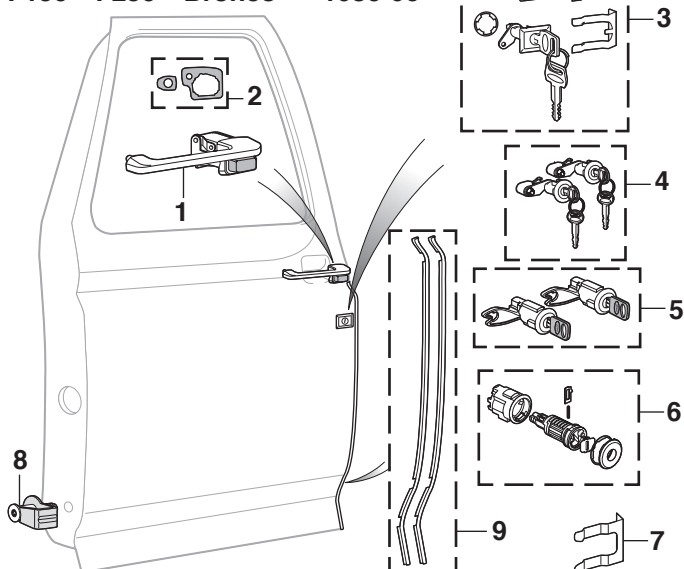
49-7691

Help prevent costly break-ins with this universal Vent Window Lock Set. Made from heavy-gauge steel, the locks install easily without tools and are removable when not in use. Add to the security of your investment and call or go online and order yours today!

PART	DESCRIPTION AND APPLICATION	REQD	LIST	SELL
49-7691	VENT WINDOW LOCK SET OF 2	(1)	12.44	9.95

Door Components

F150 F250 Bronco 1980-96



PART	ILL#	DESCRIPTION AND APPLICATION	REQD	LIST	SELL
49-7594	(1)	OUTER DOOR HANDLE-LH CHROME	80-96 (1)	49.94	39.95
49-7595		OUTER DOOR HANDLE-RH CHROME	80-96 (1)	49.94	39.95
49-7596		OUTER DOOR HANDLE-LH BLACK	80-96 (1)	37.44	29.95
49-7597		OUTER DOOR HANDLE-RH BLACK	80-96 (1)	37.44	29.95
49-7408	(2)	DOOR HANDLE GASKET SET-LH	80-96 (1)	6.19	4.95
49-7409		DOOR HANDLE GASKET SET-RH	80-96 (1)	6.19	4.95
47-0697	(3)	DOOR LOCK SET W/KEYS	80-9/80 (1)	28.69	22.95
47-0707	(4)	DOOR LOCK SET W/KEYS CHROME	10/80-91 (1)	62.44	49.95
47-0926		DOOR LOCK SET W/KEYS BLACK	10/80-91 (1)	62.44	49.95
47-0927	(5)	LOCK SET W/KEYS CHROME "A"	92-10/95 (1)	74.94	59.95
47-0928		LOCK SET W/KEYS BLACK "A"	92-10/95 (1)	87.44	69.95
47-0931	(6)	DOOR LOCK CYLINDER "B"	11/95-96 (2)	149.94	119.95
49-7250	(7)	RETAINER-DOOR LOCK	80-10/95 (2)	7.44	5.95
49-7254		RETAINER-DOOR LOCK	10/95-96 (2)	4.94	3.95
40-2772	(8)	DOOR LATCH STRIKER	80-96 (2)	16.19	12.95
42-1286	(9)	DOOR EDGE GUARD SET-SS	80-96 (1)	37.44	29.95
42-1287		DOOR EDGE GUARD SET-BLACK	80-96 (1)	31.19	24.95

Note: "A" For models without anti-theft system.

"B" Lock cylinder is uncoded. A locksmith can "code" the cylinder for use with your existing key. Keys are not included.