

# 30-5 TRANSMISSION CONTROLS (E4OD)

1997 F-250 HD/350/SUPER DUTY

\* CALIFORNIA EXCEPT SUPER DUTY  
\*\* 49 STATES OR SUPER DUTY

**DIESEL**

The Electronic Pressure Control (EPC) Solenoid is a variable force type solenoid that regulates line pressure.

FROM S143  
PAGE 30-4

361 R

C1061M C1061F

359  
GY/R

FROM S146 ON  
PAGE 30-6

HOT IN START OR RUN

FUSE  
PANEL  
PAGE 13-12

17  
10A

SEE POWER  
DISTRIBUTION  
PAGE 13-18

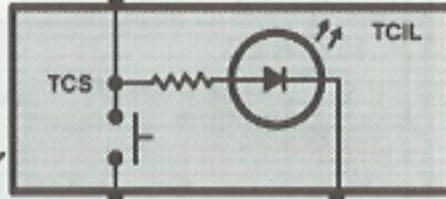
640 R/Y  
S215

640 R/Y

Indicates that 4th gear has been disengaged. May also flash if monitored sensor/actuators or circuits have failed.

C275F  
C275M  
12V  
(START OR RUN)

TRANSMISSION  
CONTROL  
SWITCH  
151-10 C10



12V (SWITCH ON)

C275M  
C275F

224 T/W

911 W/LG

224 T/W  
12V  
(SWITCH CLOSED)

C202F  
C202M

151-2 A8

911 W/LG  
C1027

POWERTRAIN  
CONTROL  
MODULE (PCM)  
PAGE 28-4

151-7 B10

E4OD  
TRANSMISSION  
151-12 A3

TRANSMISSION  
FLUID  
TEMPERATURE  
SENSOR

C1048

923 O/BK

C1061F  
C1061M

923 O/BK

C103F  
C103M

923 O/BK

The PCM monitors the voltage drop across a temperature sensitive thermistor. The PCM uses this information to determine transmission fluid temperature for adjustment of shift schedules and torque converter engagement schedules when the fluid is cold. Also used to adjust EPC pressure shift and torque converter schedules for temperature.

A momentary contact switch that signals the PCM to allow automatic shifts from 1st through 4th or from 1st through 3rd gears.

SOLID STATE

151-2 F6

925 W/Y

925 W/Y

925 W/Y

81

37

29

79\*\*  
12V