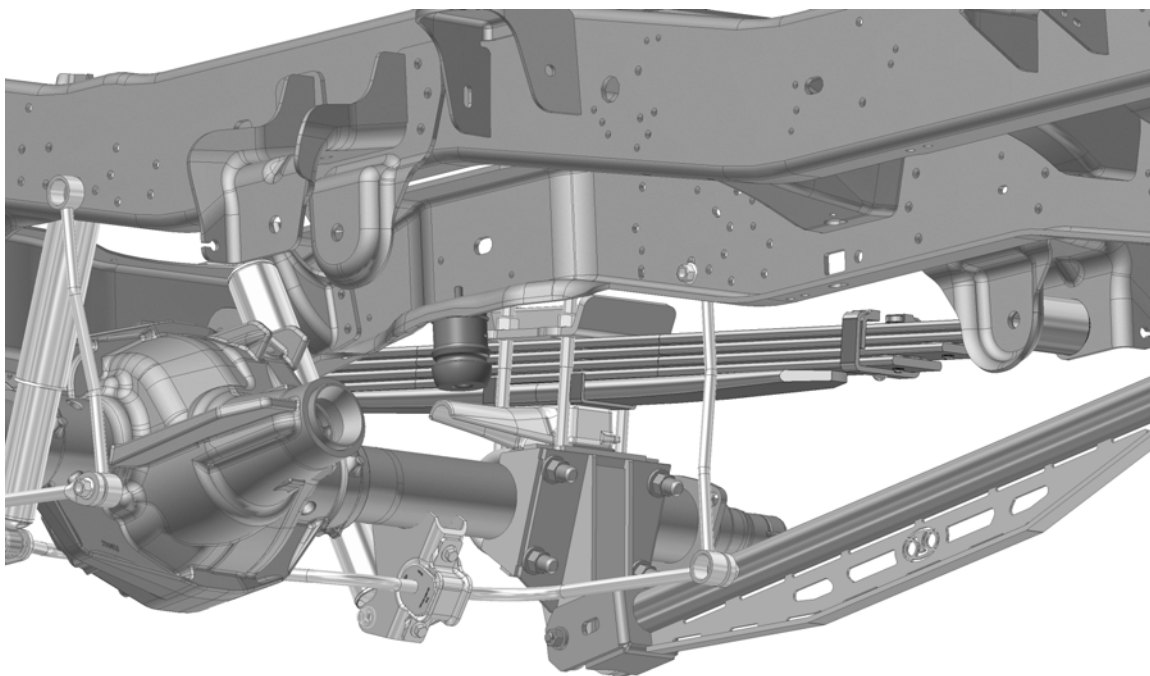


One Up Offroad

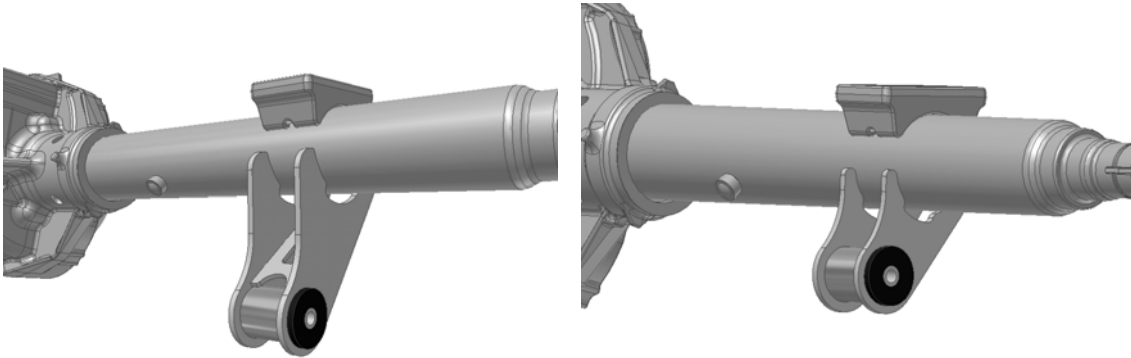
All Rear Axle Mounts for Traction Bars Installation

All One Up Offroad Parts are for racing use only. They are not for highway use. They may not be legal in your state. This is a common policy in our industry. Many motor and suspension mods say this in the fine print, We choose to do in big print before you buy the parts. All One Up Offroad Parts are built at higher standards than typical light duty truck parts and are much stronger than the OE parts they replace. While not indestructible, these parts are designed to last the life of the truck they are installed on. The owner / driver of the vehicle assumes all responsibility for misusing these parts or operating a vehicle with One Up Offroad Parts installed on it. We cannot control how the parts will be installed, who installs them or how the end user operates a vehicle with the products installed on them. If you purchased these parts and were not informed of this or you are not comfortable with this policy please return the unused products in new condition for a refund. We assume that you have mechanical ability and have worked on a truck before. If you have not worked on a truck before, and drilling holes or replacing a rear axle scares you, then please take your truck to a shop and have the work done. If you get your truck apart and can't get it back together it will be stuck where you disassembled it. A picture is worth a thousand words but take the time to read the steps. If you do it wrong, the system will not work correctly, the ride will be harsh & your time & money will be wasted.



Weld On Rear Mount Install

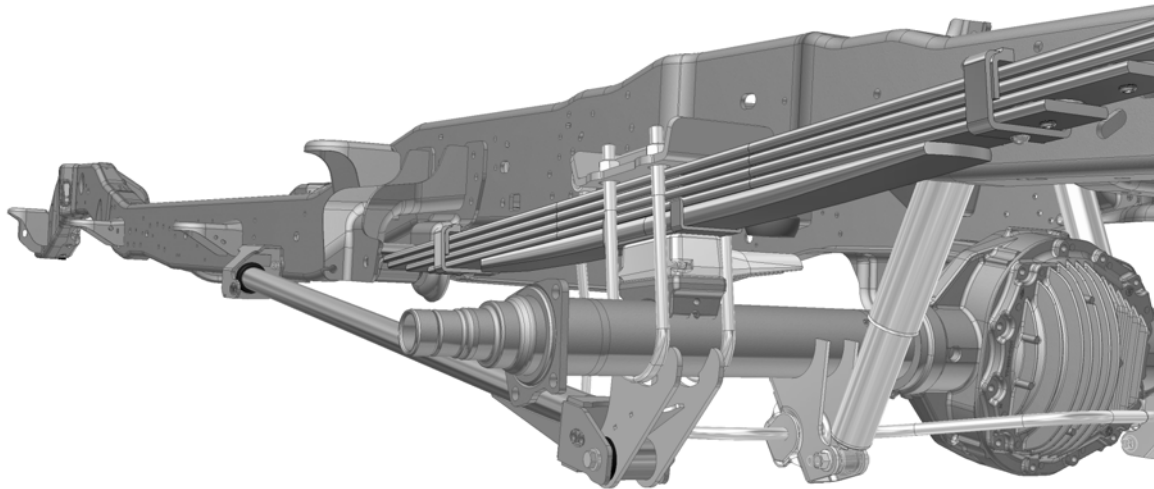
For Bolt On Rear Axle mountings see below



Max Traction Mounts

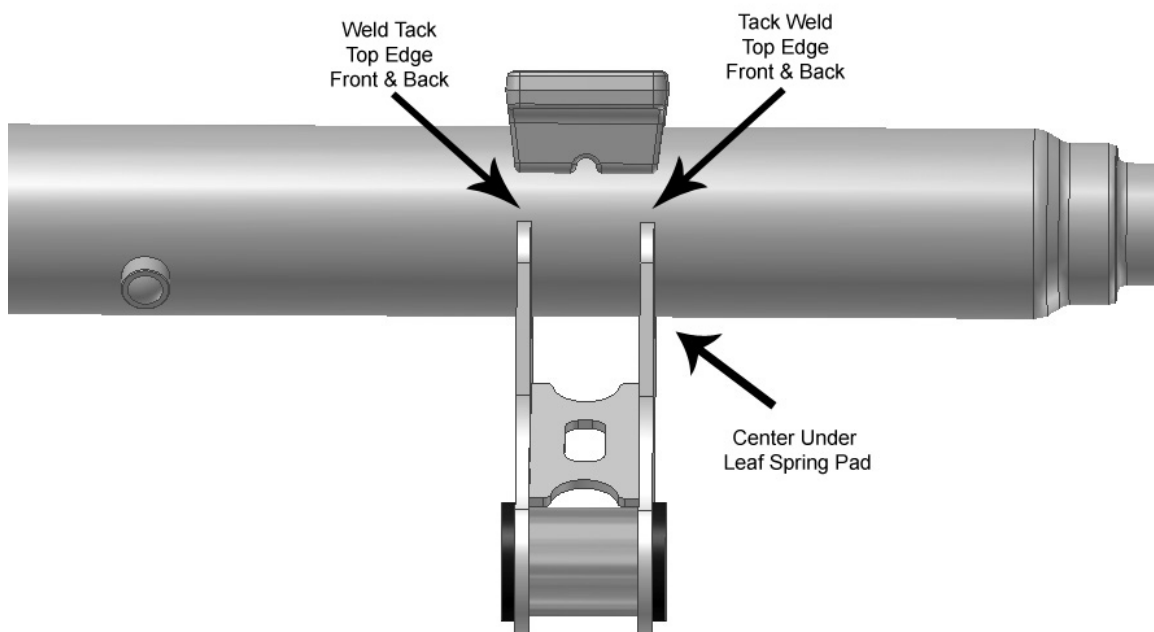
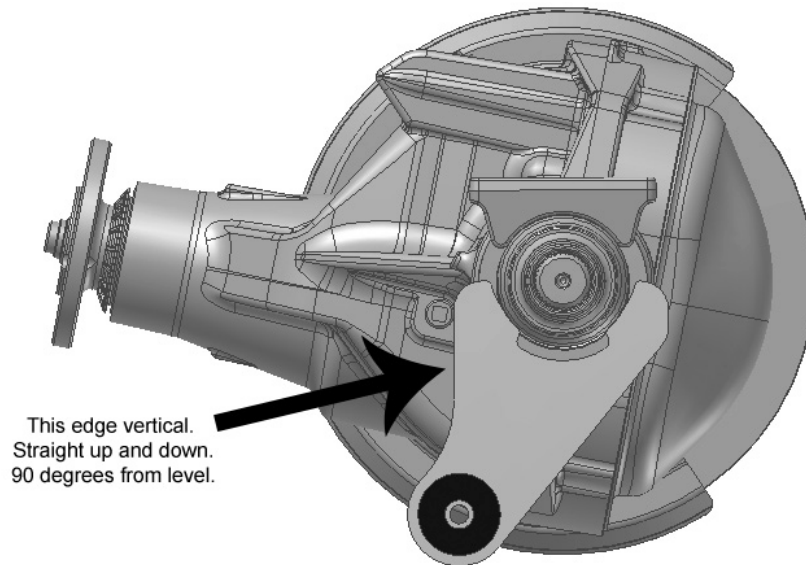
High & Tight Mounts

If you have 275 HP / 300 ft-lbs of torque and GVW's over #5000 or tires over 36" tall use the Max Traction Mounts. Use High & Tight Mounts with mild horsepower, small tires, on light weight trucks so the bars match the truck. **Do Not** think you can run the High & Tight Mounts on bigger applications to get better ground clearance, they will not control the pinion wrap and your money will be wasted. The Max Traction Mounts fit 3 1/2", 3 5/8" and 4" axle tubes. High & Tight Mounts fit 3 1/4" Axle Tubes. These come raw steel and need to be painted after they are welded on the axle.

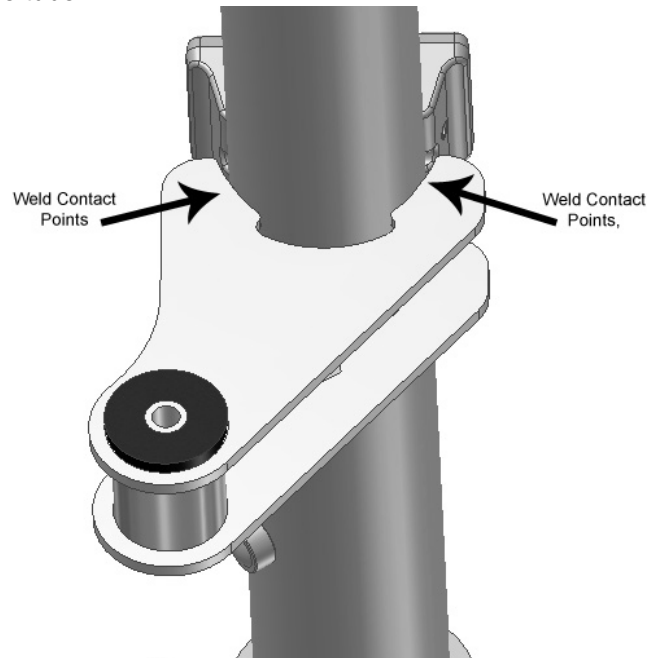


1st, Pre fit the mounts under the axle between the U-Bolts to be sure they look right and match the axle tube. These are not easy to get off once you weld them on. Remove the U-Bolts, Lube the threads before you take the nuts off the U-Bolts. You really should replace the U-Bolts with new U-Bolts, Taking off the U-Bolts is risky and there is a high chance you will gall the threads, after-market U-Bolts gall easy, stock units are usually OK. Clean the axle tube under the Leaf Spring Mount to raw steel by light grinding or a wire wheel or wire brush. The better you clean the tube the better the weld will be.

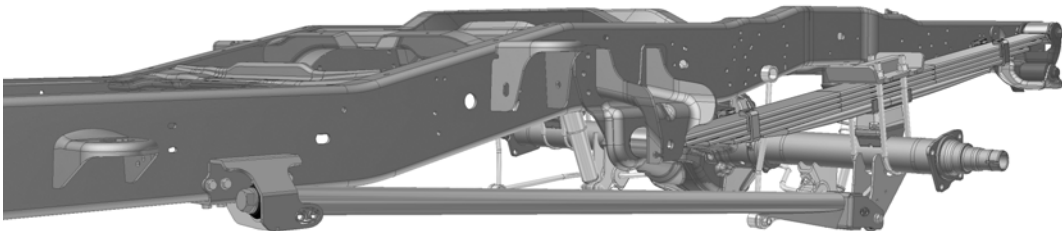
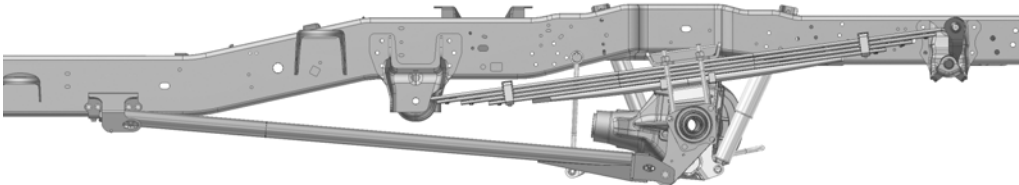
2nd, Tack the parts on the axle, take your time and double check to be sure they are straight before you weld them.



3rd, Weld ½" at a time and move to another place on the axle, not the back side of where you just welded. This will keep the heat spread out over more area on the axle. Too much heat in one place could warp your axle tube.



4th, Paint the mounts, axle and welds to keep them from corrosion. When the paint is dry, Install bushings & spacer in the Mount with Silicone lubricant. You are ready for the Traction Bars, move forward in the instructions to the type of bar you have, Fixed Length or Adaptable Length.

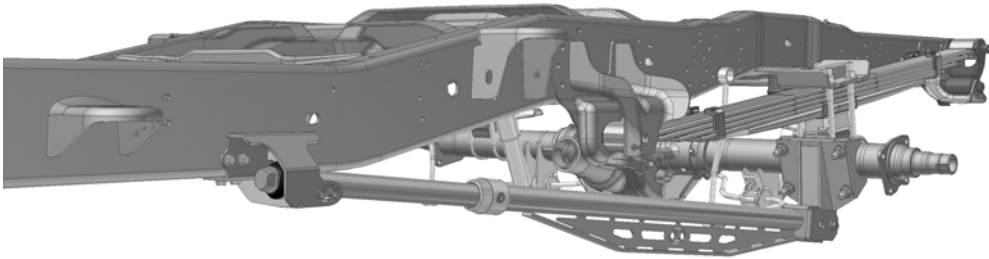


You are ready for the Traction Bar Installation
Go to the Instructions for the Traction Bar system you have, Adaptable or Fixed Length.

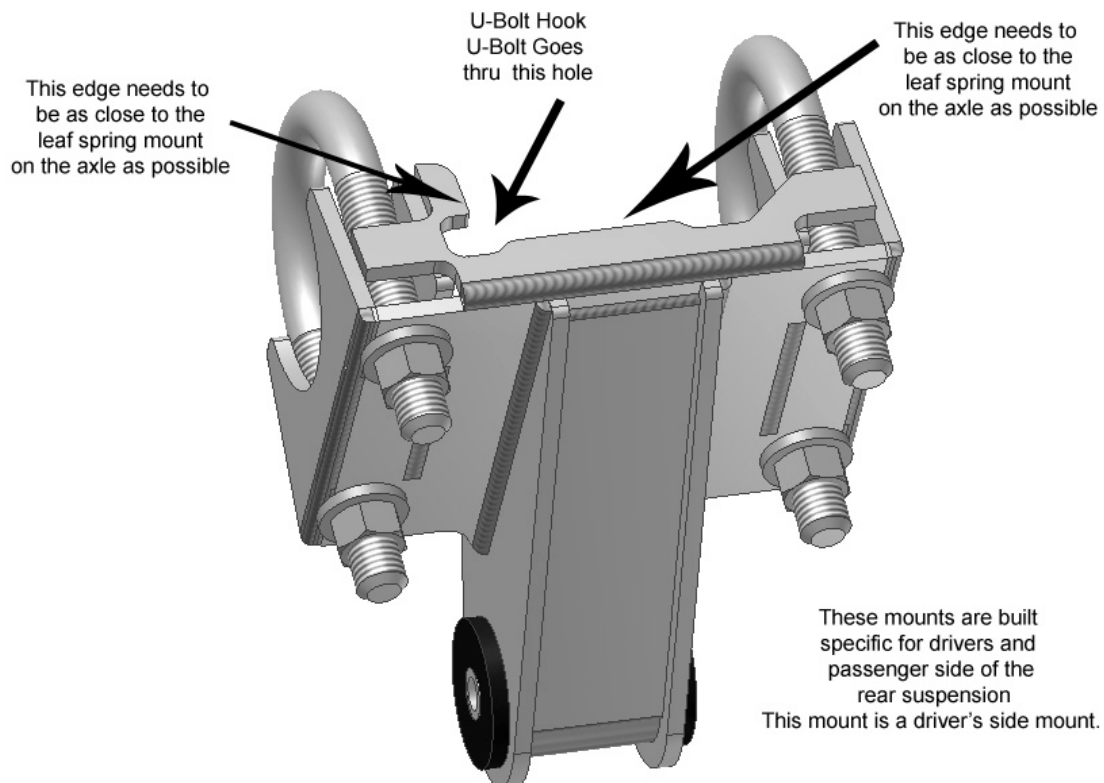
Bolt On Rear Mount Install

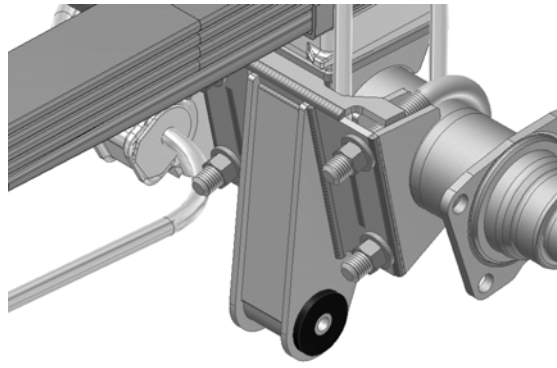
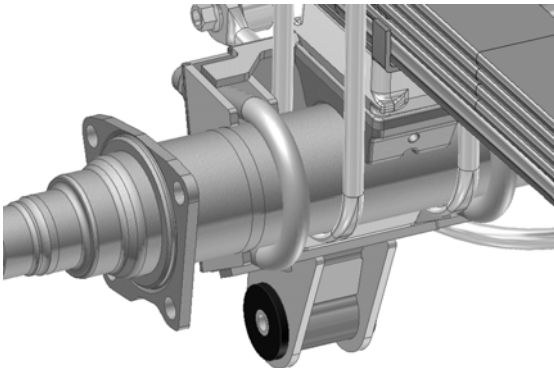
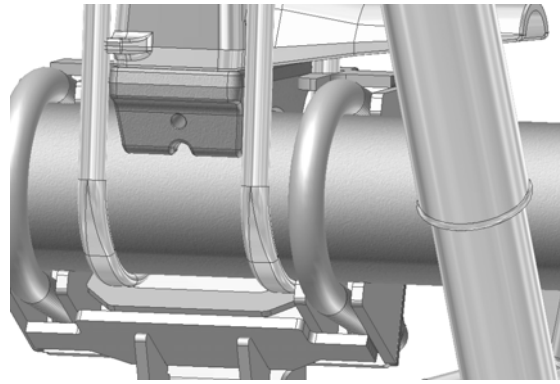
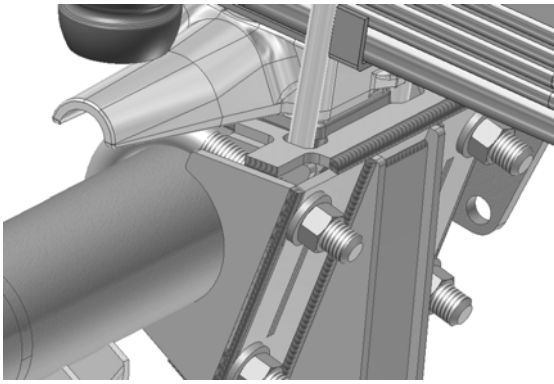
Ford F250 / F350 10.5 Rear Axle, all years with 3 5/8" tubes

For U-Bolts Down, Bolt On Rear Axle Mountings see below



1st, Be sure not to get the brake line in-between the axle tube and the U-Bolt. Torque the 5/8" U-Bolt nuts to 150ftlbs. Be creative and be sure the lines and cables don't rub, chafe or pinch.



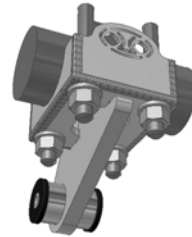
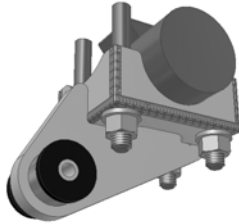


2nd, Install bushings & spacer in the Mount with Silicone lubricant.
You are ready for the Traction Bars, move forward in the instructions to the type of bar you have, Fixed Length or Adaptable Length.



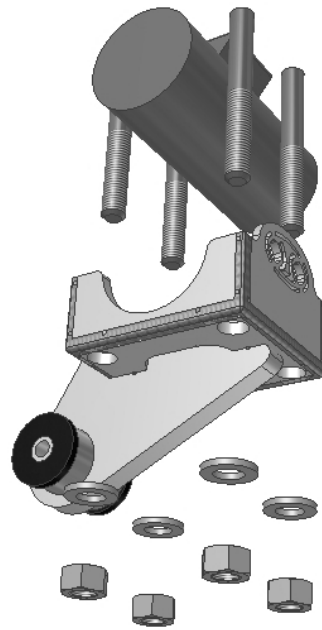
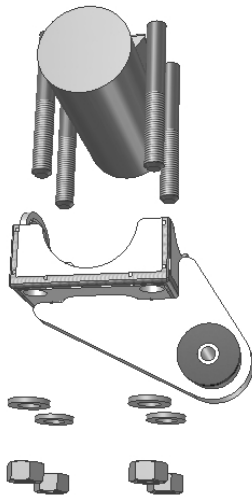
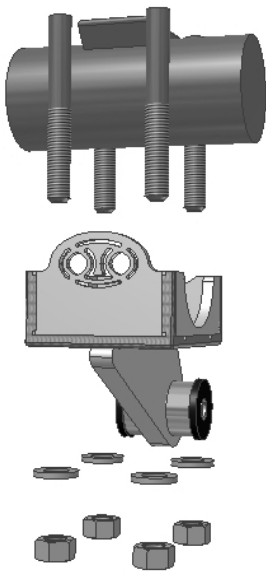
You are ready for the Traction Bar Installation
Go to the Instructions for the Traction Bar system you have, Adaptable or Fixed Length.

Bolt On Rear Mount Install Under Axle Tube with U-Bolts Down



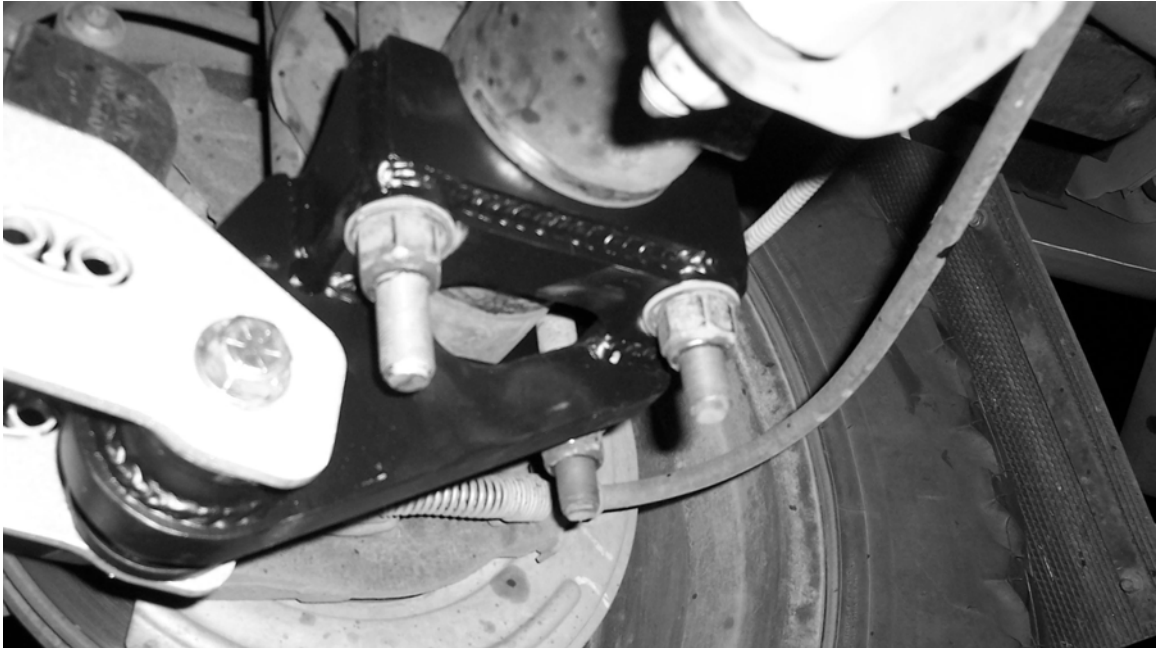
Install

1st, Remove the U-Bolts, Lube the threads before you take the nuts off the U-Bolts. You really should replace the U-Bolts with new U-Bolts, Taking off the U-Bolts is risky and there is a high chance you will gall the threads, after-market U-Bolts gall easy, stock units are usually OK. If you leave the truck on the ground and only take one side of the truck apart at a time you will not need to support the axle or the truck because the weight of the truck holds the springs to the axle.



2nd, Remove the factory bottom plate and check fit of the OUO Bottom Bracket to the axle diameter to be sure your OUO mount matches your trucks axle diameter. IF you install them and scratch the coating you will be charged to recoat them. Install the OUO Bottom Mount on the axle. Lube the U-Bolt threads with anti-seize or a light lubrication oil, but not cutting fluid. For 3/4" U-Bolts torque the U-Bolt nuts to 180ftlbs. For 5/8" U-Bolts torque the U-Bolt nuts to 150ftlbs. For 9/16" U-Bolts torque the U-Bolt nuts to 110ftlbs.

3rd, Install bushings & spacer in the Mount with Silicone lubricant. You are ready for the Traction Bars, move forward in the instructions to the type of bar you have, Fixed Length or Adaptable Length.



Short Gusseted Bars Shown With Bolt On Rear Mount Under Axle Tube with U--Bolts Down

You are ready for the Traction Bar Installation

Go to the Instructions for the Traction Bar system you have, Adaptable or Fixed Length.